

GRID N

GRID N

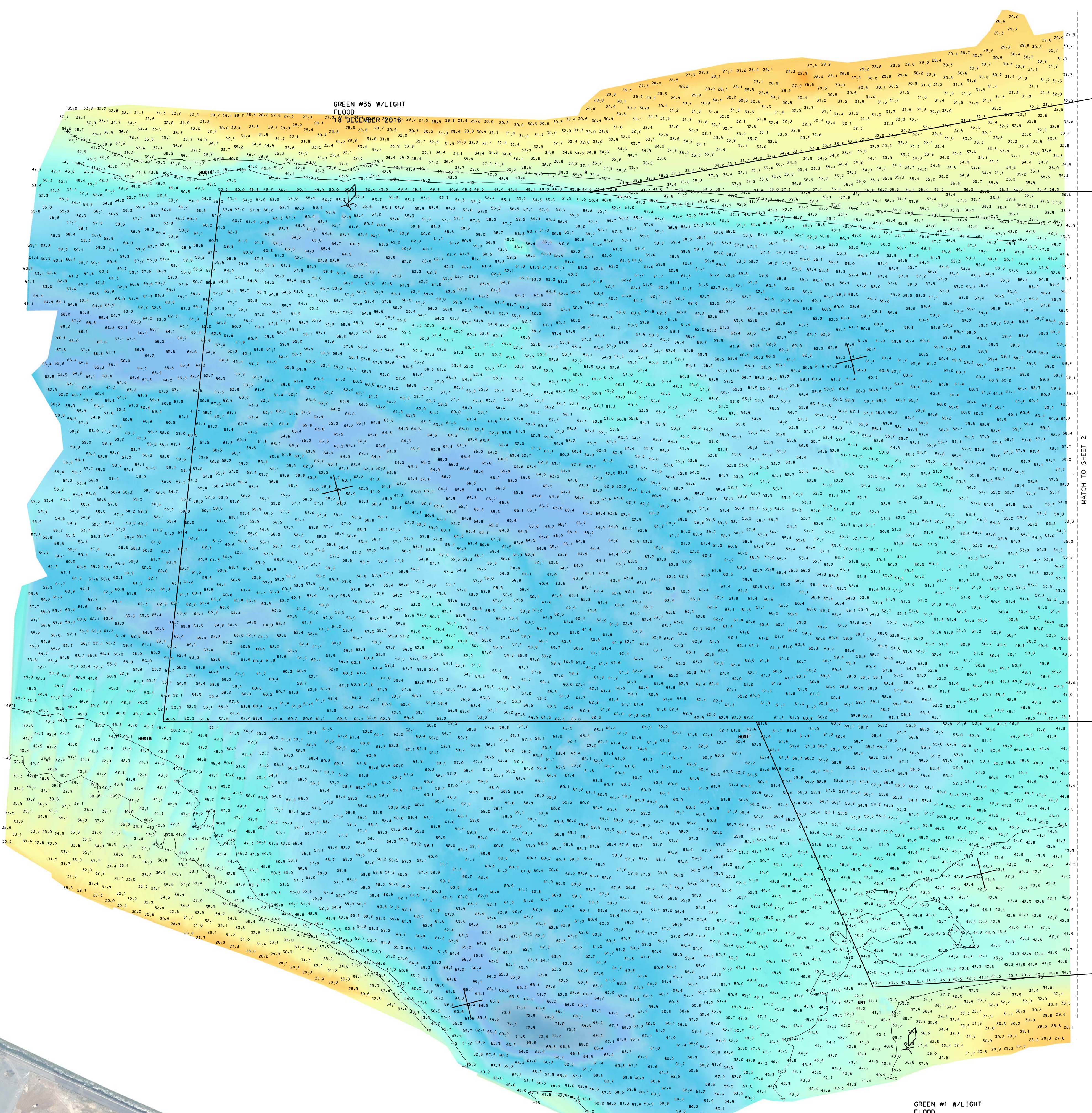
GRID N

GRID N

GRID N

GRID N

GRID N



LOCAL CONTROL DATA	
BENCHMARK:	AJD 10020
ELEVATION:	5.68' (NAVD 88)

NSRS BENCHMARK	
BENCHMARK:	HIGHWOOD 3 1932 (PID: KV4023)
ELEVATION:	167.19' (NAVD 88)



OBL CLICK ON ICON  
EDGE TO OPEN

PROJECT SPECIFIC NOTES:

- THE INFORMATION DEPICTED ON THIS MAP REPRESENTS THE RESULTS OF SURVEYS MADE ON THE DATES INDICATED AND CAN ONLY BE CONSIDERED AS THE GENERAL CONDITIONS EXISTING AT THAT TIME.
- THE SOUNDINGS ON THIS MAP MEET EM 1110-2-1003 ACCURACY STANDARDS.
- COORDINATES REFER TO US STATE PLANE COORDINATE SYSTEM NAD 1983 - LONG ISLAND LAMBERT - ZONE 3104, US SURVEY FEET.
- SOUNDINGS ON THIS MAP REFER TO THE PLANE OF MEAN LOWER LOW WATER (MLLW) [EPOCH 1983-2001].
- MEAN LOWER LOW WATER IS 2.3-2.8 FEET BELOW NAVD88 AS DETERMINED USING VDATUM (VER: 3.0).
- SOUNDINGS DEPICTED ON THIS MAP ARE BASED ON A 3' x 3' MEDIAN CELL, SORTED TO A 45' INTERVAL.
- CONTOURS ON THIS MAP WERE GENERATED USING THE MAP DATA SET.
- THE DATA DEPICTED ON THIS MAP SHOULD NOT BE USED FOR VOLUME CALCULATION PURPOSES.
- AERIAL IMAGERY PROVIDED BY NYSIS ORTHOIMAGERY (2017)
- THE PLANIMETRICS DEPICTED ON THIS MAP ARE FOR ORIENTATION PURPOSES ONLY.
- THIS SURVEY WAS PERFORMED USING REAL TIME KINEMATIC GPS FROM STATION "NY DOT RTN-RTX WEHAWKEN CAVEN POINT BASE".
- THIS MAP IS CEPD COMPLIANT IN ACCORDANCE WITH ER 1110-2-8160 AND EM 1110-2-6056.

DATE OF SURVEY:	18 DECEMBER 2018
DATE OF PLOTTING:	14 FEBRUARY 2019
SCALE:	ONE INCH = 200 FEET
FIELD BOOKS:	N/A
FILE NO.:	277
PROJECT NO.:	4786

APPROVED BY:	KEARNS
APPROVED BY:	EDRTE
APPROVED BY:	CLORDE
APPROVED BY:	MRZ
DATE:	18 FEBRUARY 2019

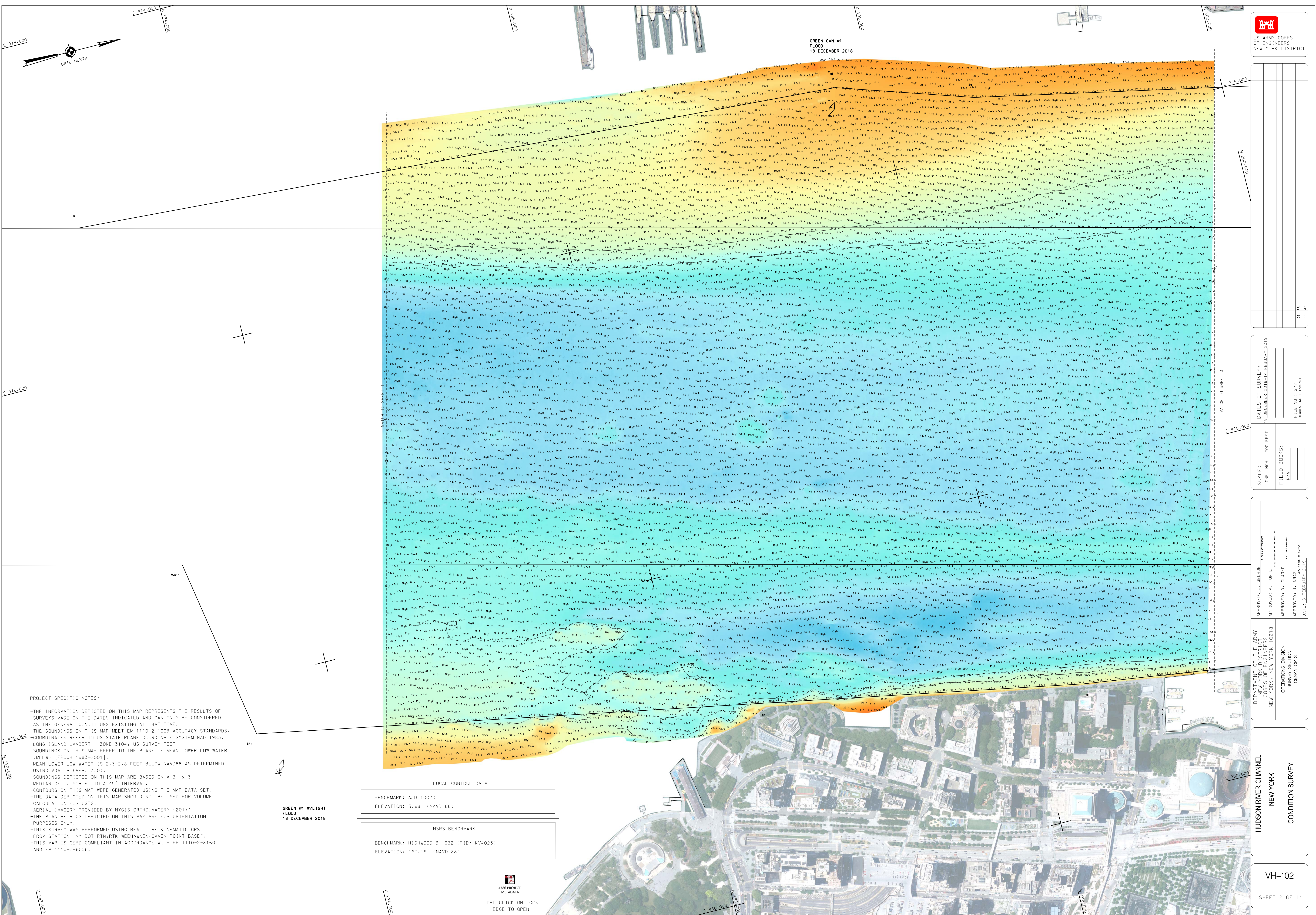
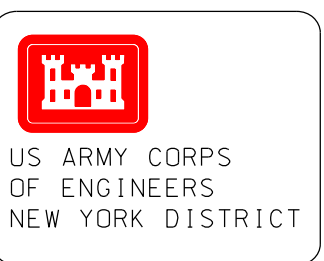
DEPARTMENT OF THE ARMY	OPERATIONS DIVISION
CORPS OF ENGINEERS	SURVEY CENTER
NEW YORK	NEW YORK

OPERATIONS DIVISION	NEW YORK
SURVEY CENTER	NEW YORK

HUDSON RIVER CHANNEL	NEW YORK
CONDITION SURVEY	NEW YORK

HUDSON RIVER CHANNEL	NEW YORK
CONDITION SURVEY	NEW YORK

FILE NO.:	277
REG. NO.:	4786/N1



**PROJECT SPECIFIC NOTES:**

- THE INFORMATION DEPICTED ON THIS MAP REPRESENTS THE RESULTS OF SURVEYS MADE ON THE DATES INDICATED AND CAN ONLY BE CONSIDERED AS THE GENERAL CONDITIONS EXISTING AT THAT TIME.
- THE SOUNDINGS ON THIS MAP MEET EM 1110-2-1003 ACCURACY STANDARDS.
- COORDINATES REFER TO US STATE PLANE COORDINATE SYSTEM NAD 1983, LONG ISLAND LAMBERT - ZONE 3/04, US SURVEY FEET.
- SOUNDINGS ON THIS MAP REFER TO THE PLANE OF MEAN LOWER LOW WATER (MLLW) [EPOCH 1983-2001].
- MEAN LOWER LOW WATER IS 2.3-2.8 FEET BELOW NAVD83 AS DETERMINED USING VDATUM (VER. 3.0).
- SOUNDINGS DEPICTED ON THIS MAP ARE BASED ON A 3' x 3' MEDIAN CELL, SORTED TO A 45° INTERVAL.
- CONTOURS ON THIS MAP WERE GENERATED USING THE MAP DATA SET.
- THE DATA DEPICTED ON THIS MAP SHOULD NOT BE USED FOR VOLUME CALCULATION PURPOSES.
- AERIAL IMAGERY PROVIDED BY NYGIS ORTHOIMAGERY (2017)
- THE PLANIMETRICS DEPICTED ON THIS MAP ARE FOR ORIENTATION PURPOSES ONLY.
- THIS SURVEY WAS PERFORMED USING REAL TIME KINEMATIC GPS FROM STATION "N" DOT RTN-RTK WEEHAWKEN-CAVEN POINT BASE".
- THIS MAP IS CEPO COMPLIANT IN ACCORDANCE WITH ER 1110-2-8160 AND EM 1110-2-6056.

LOCAL CONTROL DATA	
BENCHMARK: AJD 10020	ELEVATION: 5.68' (NAVD 88)
NSRS BENCHMARK	
BENCHMARK: HIGHWOOD 3 1932 (PID: KV4023)	ELEVATION: 167.19' (NAVD 88)

4786 PROJECT METADATA  
DBL CLICK ON ICON  
EDGE TO OPEN

DATE: 18 FEBRUARY 2018	FILE NO.: 277
DATE: 18 FEBRUARY 2018	REQ. NO.: 4786/91

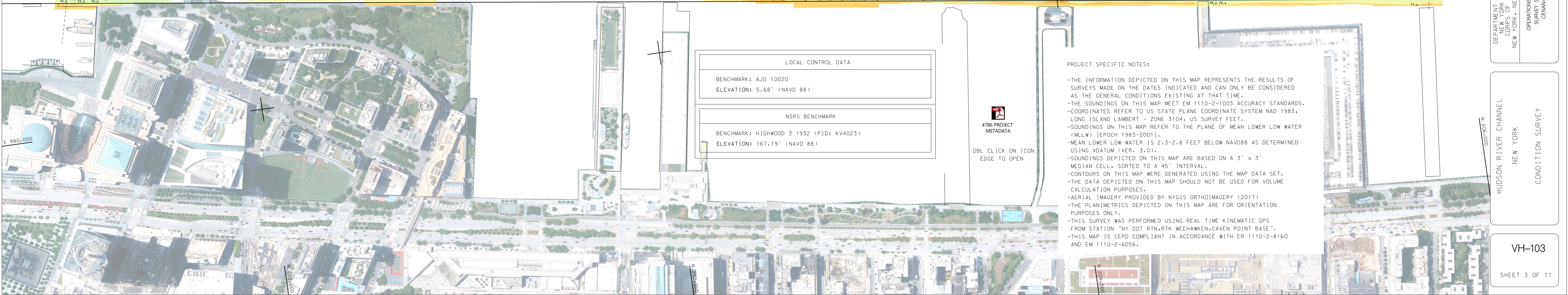
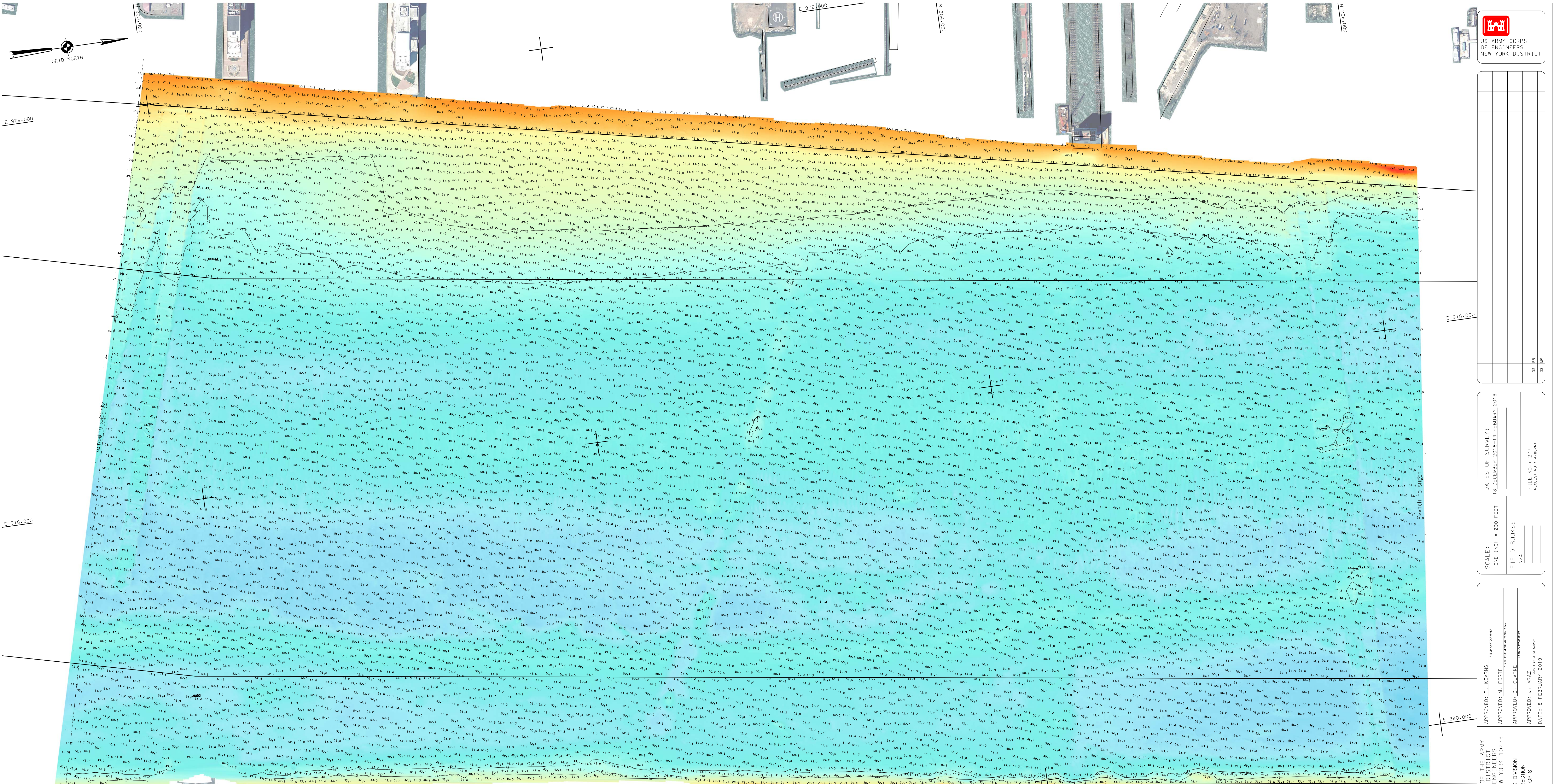
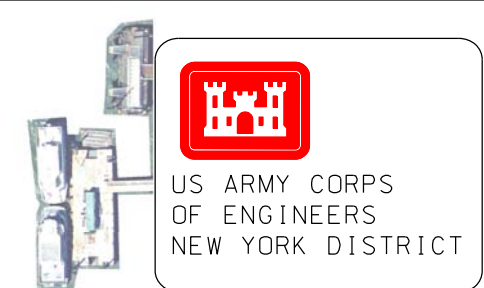
SCALES:  
ONE INCH = 200 FEET  
FIELD BOOKS:  
N/A

APPROVED: L. GERBER  
APPROVED: M. EHRLE  
APPROVED: D. CLARKE  
DATE: 18 FEBRUARY 2018

DEPARTMENT OF THE ARMY  
CORPS OF ENGINEERS  
NEW YORK, NEW YORK 10278

OPERATIONS DIVISION  
NEW YORK  
HUDSON RIVER CHANNEL  
NEW YORK  
CONDITION SURVEY

VH-102  
SHEET 2 OF 11

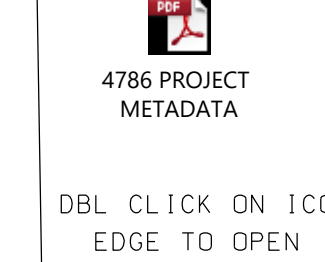


**LOCAL CONTROL DATA**

BENCHMARK: AJD 10020  
ELEVATION: 5.68' (NAVD 88)

**NSRS BENCHMARK**

BENCHMARK: HIGHWOOD 3 1932 (PID: KV4023)  
ELEVATION: 167.19' (NAVD 88)



4786 PROJECT METADATA

DBL CLICK ON ICON EDGE TO OPEN

**PROJECT SPECIFIC NOTES:**

- THE INFORMATION DEPICTED ON THIS MAP REPRESENTS THE RESULTS OF SURVEYS MADE ON THE DATES INDICATED AND CAN ONLY BE CONSIDERED AS THE GENERAL CONDITIONS EXISTING AT THAT TIME.
- THE SOUNDINGS ON THIS MAP MEET EM 1110-2-1003 ACCURACY STANDARDS.
- COORDINATES REFER TO US STATE PLANE COORDINATE SYSTEM NA083, LONG ISLAND LAMBERT - ZONE 3104, US SURVEY FEET.
- SOUNDINGS ON THIS MAP REFER TO THE PLANE OF MEAN LOWER LOW WATER (MLLW) [EPDCH 1983-2001].
- MEAN LOWER LOW WATER IS 2.3-2.8 FEET BELOW NAVD88 AS DETERMINED USING VDATUM 1 (VER. 3.0).
- SOUNDINGS DEPICTED ON THIS MAP ARE BASED ON A 3' x 3' MEDIAN CELL, SORTED TO A 45° INTERVAL.
- CONTOURS ON THIS MAP WERE GENERATED USING THE MAP DATA SET.
- THE DATA DEPICTED ON THIS MAP SHOULD NOT BE USED FOR VOLUME CALCULATION PURPOSES.
- AERIAL IMAGERY PROVIDED BY NYGIS ORTHOIMAGERY (2017)
- THE PLANIMETRICS DEPICTED ON THIS MAP ARE FOR ORIENTATION PURPOSES ONLY.
- THIS SURVEY WAS PERFORMED USING REAL TIME KINEMATIC GPS FROM STATION NY01 RTK, RTK WEHAKKEN, CAVEN WITH ER 1110-2-8160 AND EM 1110-2-6056.

DATE OF SURVEY:	18 DECEMBER 2018-14 FEBRUARY 2019
SCALE:	ONE INCH = 200 FEET
FIELD BOOKS:	N/A
FILE NO.:	101-277
PROJECT NO.:	4786

APPROVED BY:	LEAKINS
APPROVED BY:	EDGIE
APPROVED BY:	CLORKE
APPROVED BY:	WRAZ
DATE:	18 FEBRUARY 2019

DEPARTMENT OF THE ARMY  
CORPS OF ENGINEERS  
NEW YORK, NEW YORK 10278

OPERATIONS DIVISION  
SURVEYING  
NEW YORK

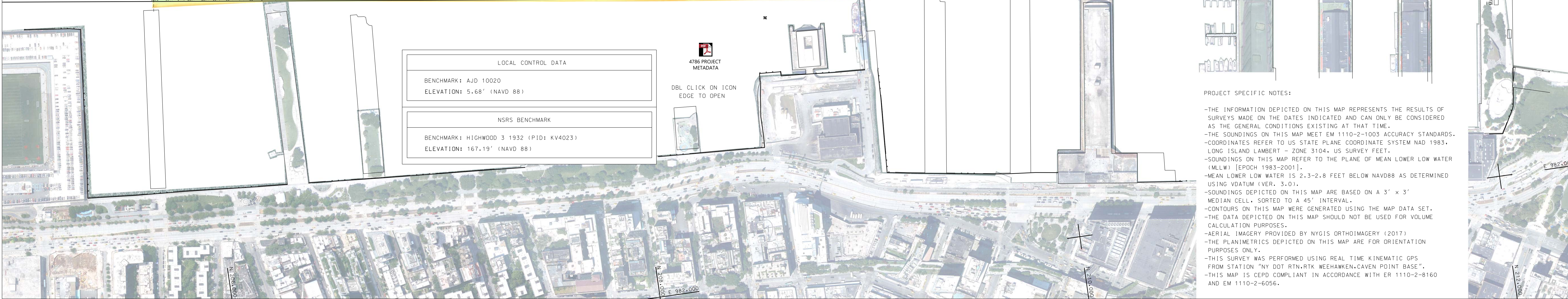
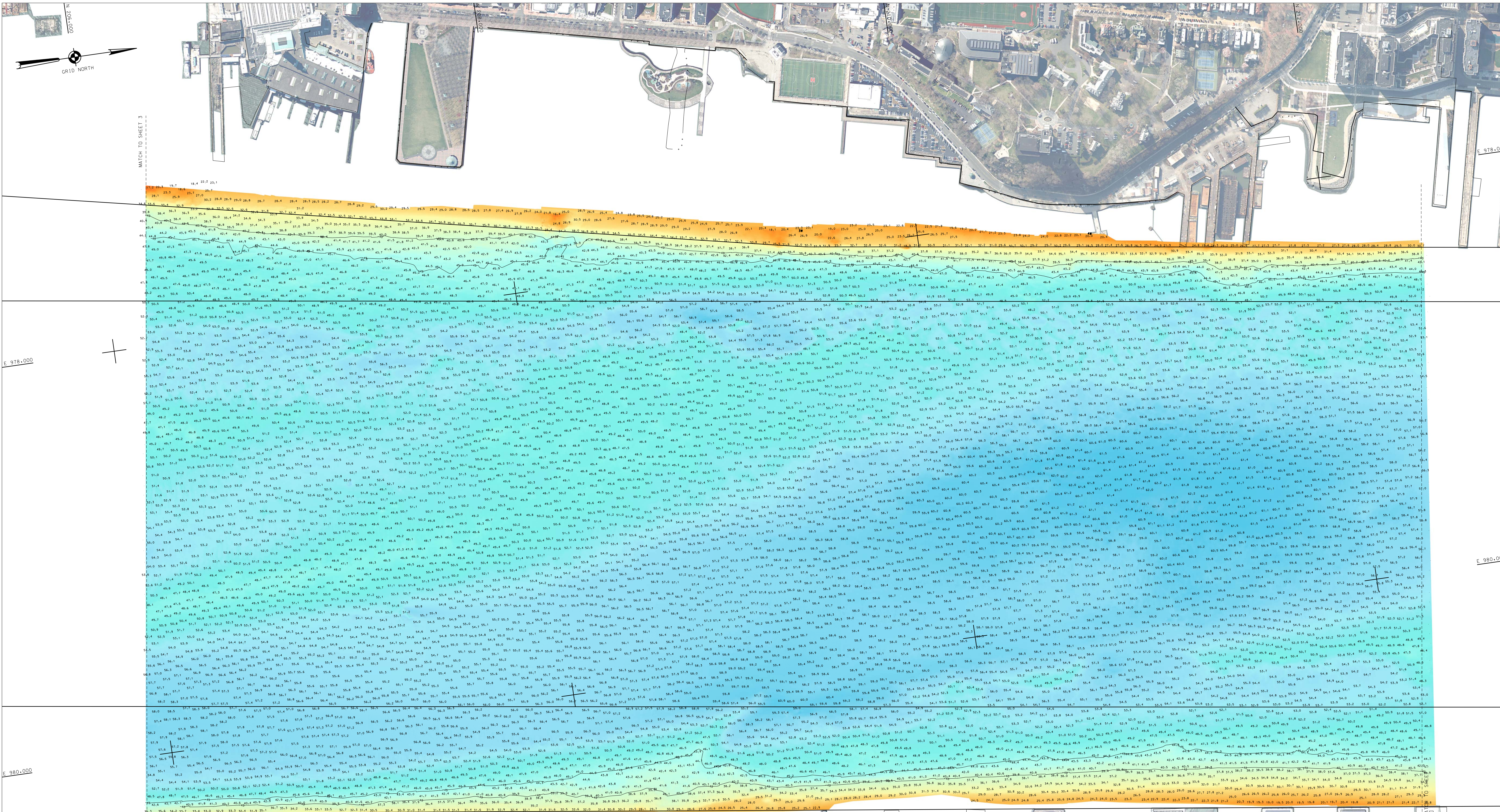
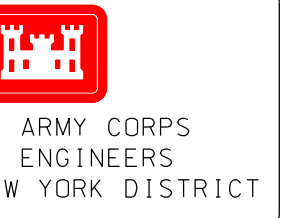
HUDSON RIVER CHANNEL  
NEW YORK

CONDITION SURVEY

VH-103

SHEET 3 OF 11

FILE NO. 277  
REV. NO. 4786/NI



LOCAL CONTROL DATA	
BENCHMARK: AJD 10020	ELEVATION: 5.68' (NAVD 88)
NRSR BENCHMARK	
BENCHMARK: HIGHWOOD 3 1932 (PID: KV4023)	ELEVATION: 167.19' (NAVD 88)

4786 PROJECT METADATA  
DBL CLICK ON ICON  
EDGE TO OPEN

- PROJECT SPECIFIC NOTES:
- THE INFORMATION NOTED ON THIS MAP REPRESENTS THE RESULTS OF SURVEYS MADE ON THE DATES INDICATED AND CAN ONLY BE CONSIDERED AS THE GENERAL CONDITIONS EXISTING AT THAT TIME.
  - THE SOUNDINGS ON THIS MAP MEET EN 1110-2-1003 ACCURACY STANDARDS.
  - COORDINATES REFER TO US STATE PLANE COORDINATE SYSTEM NAD 1983, LONG ISLAND LAMBERT - ZONE 3104, US SURVEY FEET.
  - SOUNDINGS ON THIS MAP REFER TO THE PLANE OF MEAN LOWER LOW WATER (MLLW) [EPOCH 1983-2001].
  - MEAN LOWER LOW WATER IS 2.3-2.8 FEET BELOW NAVD88 AS DETERMINED USING VDATUM (VER. 3.0).
  - SOUNDINGS DEPICTED ON THIS MAP ARE BASED ON A 3' x 3' MEDIAN CELL, SORTED TO A 45° INTERVAL.
  - CONTOURS ON THIS MAP WERE GENERATED USING THE MAP DATA SET.
  - THE DATA DEPICTED ON THIS MAP SHOULD NOT BE USED FOR VOLUME CALCULATION PURPOSES.
  - AERIAL IMAGERY PROVIDED BY NYGIS ORTHOIMAGERY (2017)
  - THE PLANIMETRICS DEPICTED ON THIS MAP ARE FOR ORIENTATION PURPOSES ONLY.
  - THIS SURVEY WAS PERFORMED USING REAL TIME KINEMATIC GPS FROM STATION "NY DOT RTN-RTK BEHAVEN/CLAYTON POINT BASE".
  - THIS MAP IS CEPO COMPLIANT IN ACCORDANCE WITH ER 1110-2-8160 AND EN 1110-2-6056.

DATE OF SURVEY: 18 DEC 2018 - 14 FEB 2019	FILE NO.: 277
SCALE: ONE INCH = 200 FEET	DESIGN
FIELD BOOKS: N/A	DATE
APPROVED: P. KEARNS	DATE: 18 FEBRUARY 2019
APPROVED: M. EHRLE	
APPROVED: D. CLORSE	
APPROVED: J. MRZ	

DEPARTMENT OF THE ARMY  
CORPS OF ENGINEERS  
NEW YORK, NEW YORK 10278

OPERATIONS DIVISION  
SOUNDING SURVEY  
CHERRY-COPS

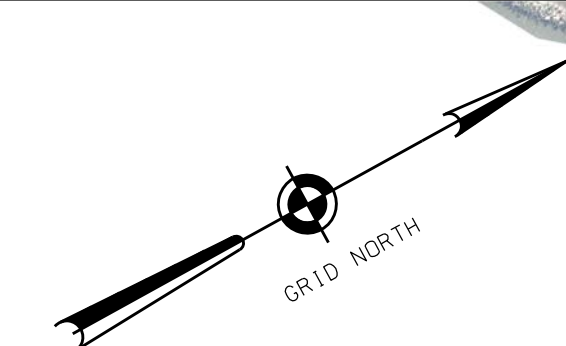
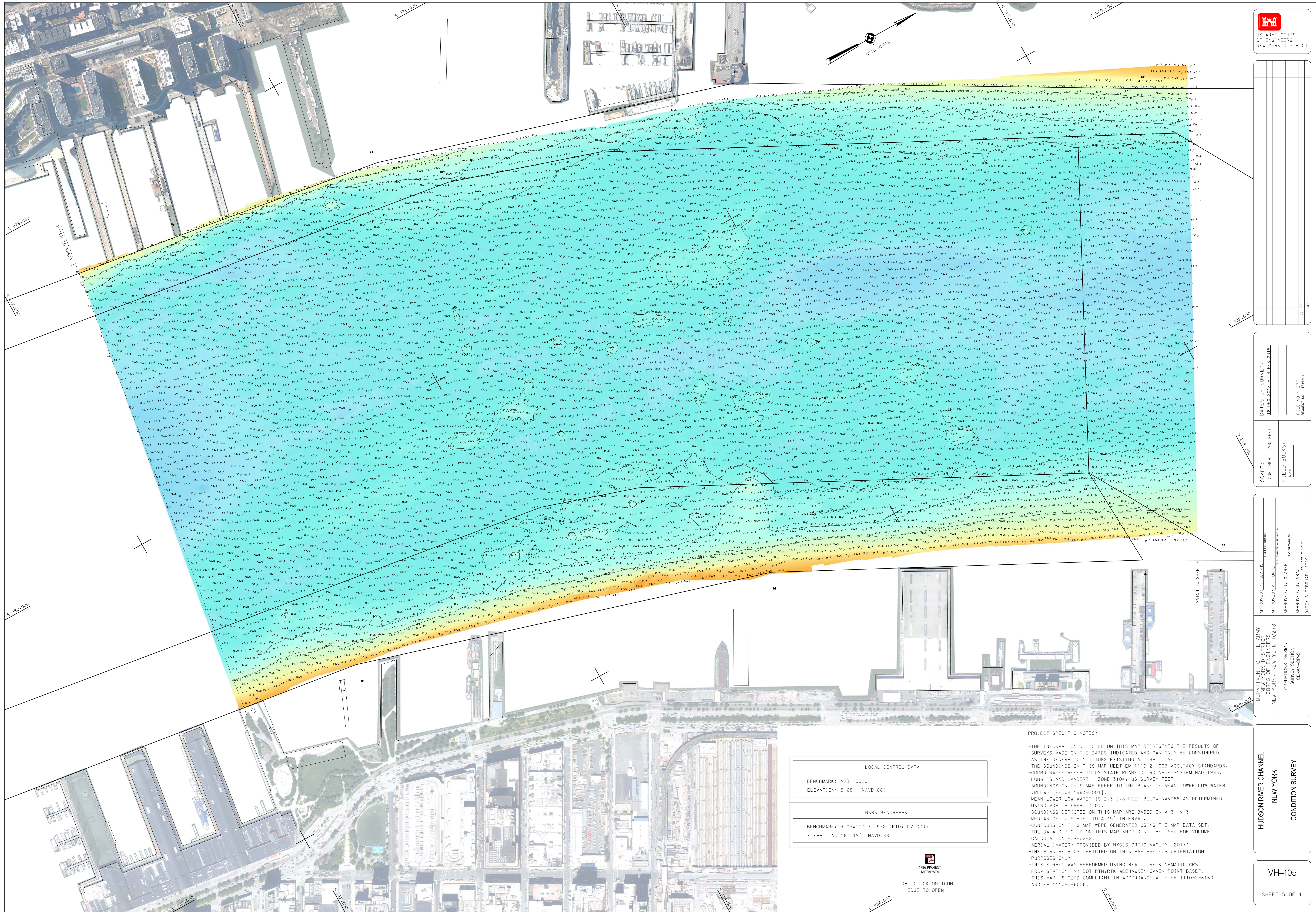
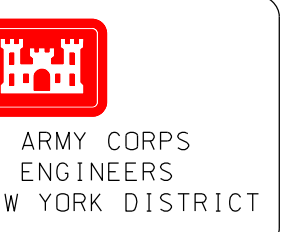
HUDSON RIVER CHANNEL  
NEW YORK

CONDITION SURVEY

VH-104

SHEET 4 OF 11

FILE NO.: 277  
REG. NO.: 4786/NI



DATE OF SURVEY: 18 DEC 2018 - 14 FEB 2019	FILE NO.: 277
SCALE: ONE INCH = 200 FEET	DESIGN
FIELD BOOKS: N/A	DATE

APPROVED: P. KERBINS	DATE: 18 FEBRUARY, 2019
APPROVED: M. EGRTE	
APPROVED: D. CLORSE	
APPROVED: J. WRZ	

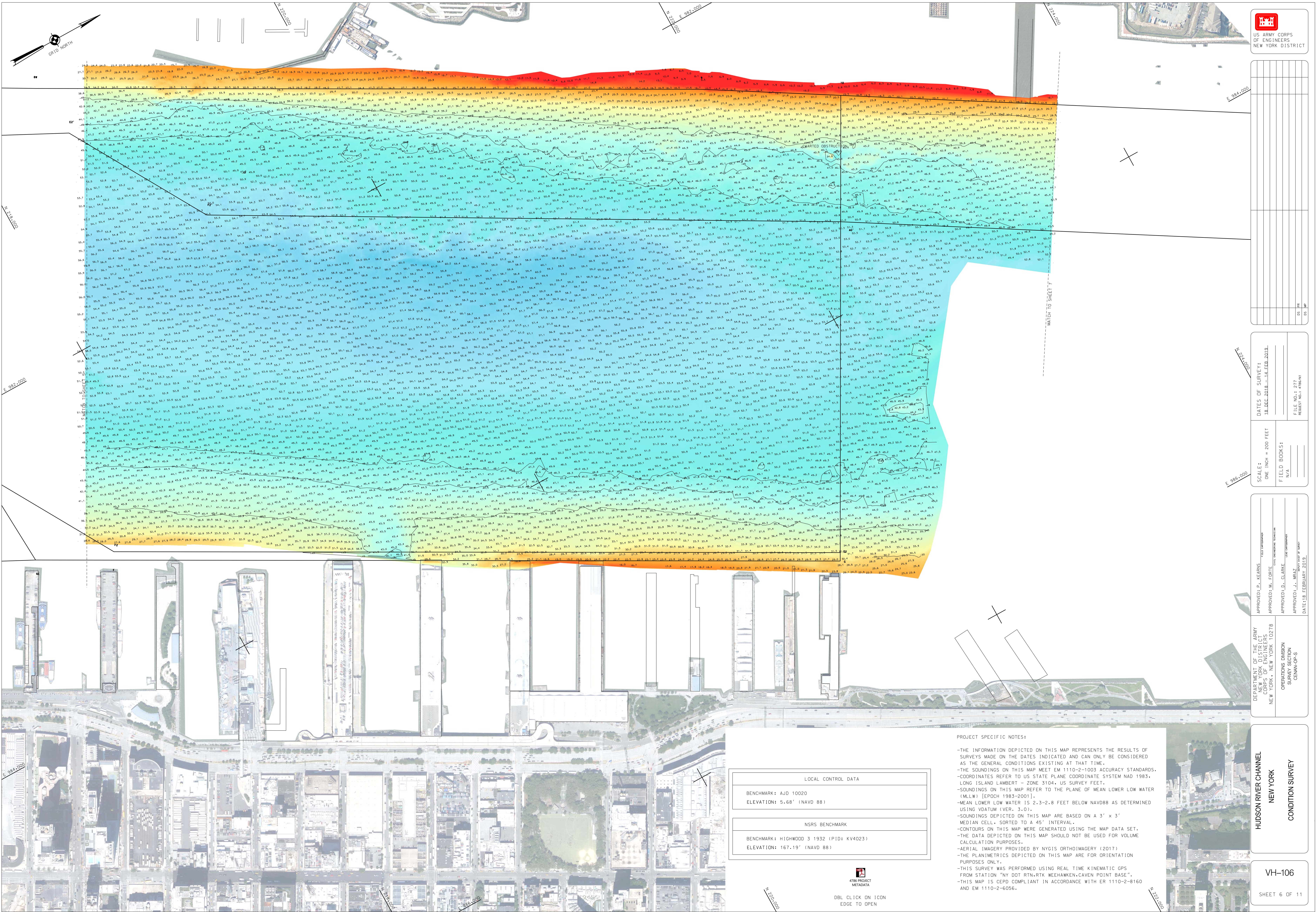
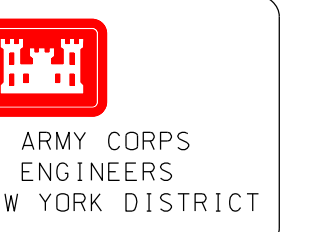
DEPARTMENT OF THE ARMY CORPS OF ENGINEERS NEW YORK, NEW YORK 10278	OPERATIONS DIVISION SOUTH PLANT NEW YORK, NEW YORK 10278
HUDSON RIVER CHANNEL NEW YORK	CONDITION SURVEY

FILE NO.: 277
REV. NO.: 4786/NI

LOCAL CONTROL DATA BENCHMARK: AJD 10020 ELEVATION: 5.68' (NAVD 88)
NSRS BENCHMARK BENCHMARK: HIGHWOOD 3 1932 (PID: KV4023) ELEVATION: 167.19' (NAVD 88)

4786 PROJECT METADATA  
DBL CLICK ON ICON  
EDGE TO OPEN

PROJECT SPECIFIC NOTES:  
 -THE INFORMATION DEPICTED ON THIS MAP REPRESENTS THE RESULTS OF SURVEYS MADE ON THE DATES INDICATED AND CAN ONLY BE CONSIDERED AS THE GENERAL CONDITIONS EXISTING AT THAT TIME.  
 -THE SOUNDINGS ON THIS MAP MEET EM 1110-2-1003 ACCURACY STANDARDS.  
 -COORDINATES REFER TO US STATE PLANE COORDINATE SYSTEM NAD 1983.  
 -CONTOURS ON THIS MAP WERE GENERATED USING THE MAP DATA SET.  
 -SOUNDINGS ON THIS MAP REFER TO THE PLANE OF MEAN LOWER LOW WATER (MLLW) [EPOCH 1983-2001].  
 -MEAN LOWER LOW WATER IS 2.3-2.8 FEET BELOW NAVD88 AS DETERMINED USING VDATUM IVER. 3.01.  
 -SOUNDINGS DEPICTED ON THIS MAP ARE BASED ON A 3' x 3' MEDIAN CELL, SORTED TO A 45° INTERVAL.  
 -CONTOURS ON THIS MAP WERE GENERATED USING THE MAP DATA SET.  
 -THE DATA DEPICTED ON THIS MAP SHOULD NOT BE USED FOR VOLUME CALCULATION PURPOSES.  
 -AERIAL IMAGERY PROVIDED BY NYGIS ORTHOIMAGERY (2017)  
 -THE PLANIMETRICS DEPICTED ON THIS MAP ARE FOR ORIENTATION PURPOSES ONLY.  
 -THIS SURVEY WAS PERFORMED USING REAL TIME KINEMATIC GPS FROM STATION 7N DOT RTK WEHAWKEN-CAVEN POINT BASE 1.  
 -THIS MAP IS CEPD COMPLIANT IN ACCORDANCE WITH ER 1110-2-8160 AND EM 1110-2-6056.



DATE OF SURVEY: 18 DEC 2018 - 14 FEB 2019	FILE NO.: 277
SCALE: ONE INCH = 200 FEET	PROJECT NO.: 476
FIELD BOOKS: N/A	REVISION NO.: 1

APPROVED: P. KEARNS	DATE: 18 FEBRUARY 2019
APPROVED: M. EDITE	
APPROVED: D. CLORSE	
APPROVED: J. WRAZ	

DEPARTMENT OF THE ARMY CORPS OF ENGINEERS NEW YORK, NEW YORK 10278	OPERATIONS DIVISION NEW YORK
HUDSON RIVER CHANNEL NEW YORK	CONDITION SURVEY

VH-106	SHEET 6 OF 11
--------	---------------

**LOCAL CONTROL DATA**

BENCHMARK: AJD 10020  
ELEVATION: 5.68' (NAVD 88)

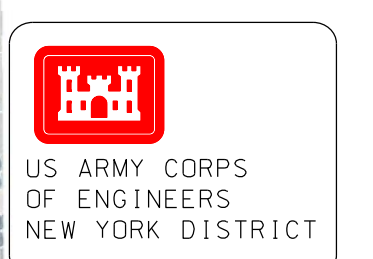
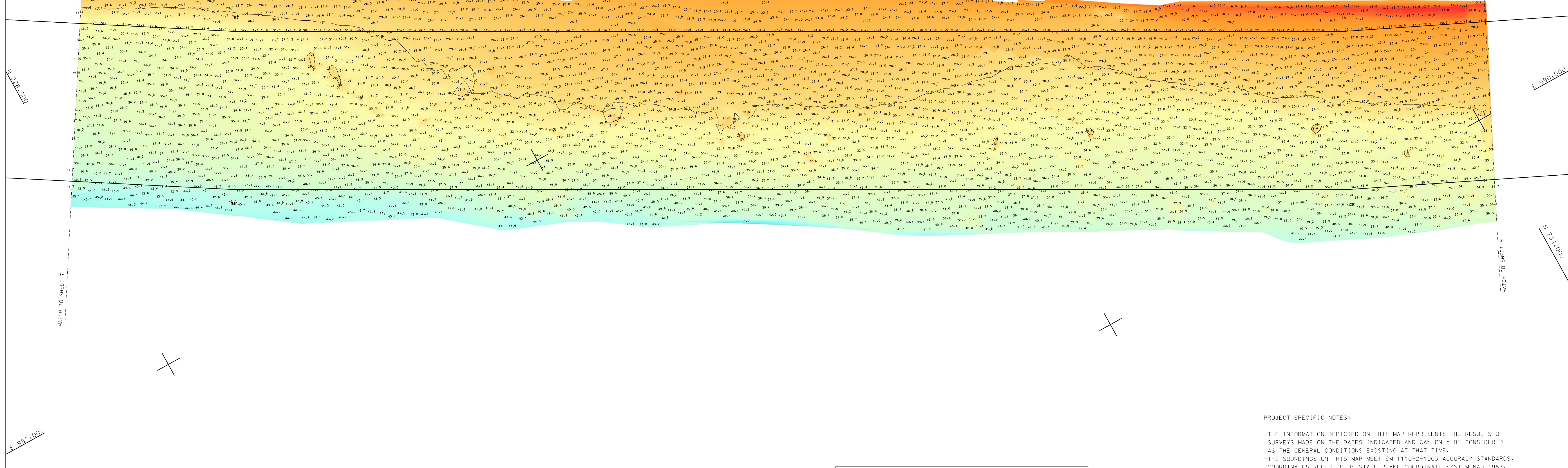
**NSRS BENCHMARK**

BENCHMARK: HIGHWOOD 3 1932 (PID: KV4023)  
ELEVATION: 167.19' (NAVD 88)

- PROJECT SPECIFIC NOTES:**
- THE INFORMATION DEPICTED ON THIS MAP REPRESENTS THE RESULTS OF SURVEYS MADE ON THE DATES INDICATED AND CAN ONLY BE CONSIDERED AS THE GENERAL CONDITIONS EXISTING AT THAT TIME.
  - THE SOUNDINGS ON THIS MAP MEET EM 1110-2-1003 ACCURACY STANDARDS.
  - COORDINATES REFER TO US STATE PLANE COORDINATE SYSTEM NA 1983, LONG ISLAND LAMBERT - ZONE 3104, US SURVEY FEET.
  - SOUNDINGS ON THIS MAP REFER TO THE PLANE OF MEAN LOWER LOW WATER (MLLW) [EPOCH 1983-2001].
  - MEAN LOWER LOW WATER IS 2.3-2.8 FEET BELOW NAVD88 AS DETERMINED USING VDATUM (VER. 3.0).
  - SOUNDINGS DEPICTED ON THIS MAP ARE BASED ON A 3' x 3' MEDIAN CELL, SORTED TO A 45' INTERVAL.
  - CONTOURS ON THIS MAP WERE GENERATED USING THE MAP DATA SET.
  - THE DATA DEPICTED ON THIS MAP SHOULD NOT BE USED FOR VOLUME CALCULATION PURPOSES.
  - AERIAL IMAGERY PROVIDED BY NYGIS ORTHOIMAGERY (2017)
  - METRIC SOUNDINGS DEPICTED ON THIS MAP ARE FOR ORIENTATION PURPOSES ONLY.
  - THIS SURVEY WAS PERFORMED USING REAL TIME KINEMATIC GPS FROM STATION "NY DOT RTN-RTK WEEHAWKEN-CAVEN POINT BASE".
  - THIS MAP IS CEPD COMPLIANT IN ACCORDANCE WITH ER 1110-2-8160 AND EM 1110-2-6056.

476 PROJECT METADATA  
DBL CLICK ON ICON  
EDGE TO OPEN





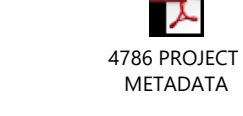
DATE: 18 FEBRUARY 2016	FILE NO.: 277	PROJECT: N.Y. RTX
SCALE: 1" = 200' FEET	FIELD BOOKS: N/A	DATE: 14 FEB 2018

APPROVED: E. KEARNS	OPERATIONS DIVISION
APPROVED: M. EDGIE	SCHEMATIC DEVELOPMENT
APPROVED: D. CLARKE	DESIGN
APPROVED: J. WRAZ	CONSTRUCTION
DATE: 18 FEBRUARY 2016	

**PROJECT SPECIFIC NOTES:**

- THE INFORMATION DEPICTED ON THIS MAP REPRESENTS THE RESULTS OF SURVEYS MADE ON THE DATES INDICATED AND CAN ONLY BE CONSIDERED AS THE GENERAL CONDITIONS EXISTING AT THAT TIME.
- THE SOUNDINGS ON THIS MAP MEET EM 1110-2-1003 ACCURACY STANDARDS.
- COORDINATES REFER TO US STATE PLANE COORDINATE SYSTEM NAD 1983, LONG ISLAND LAMBERT - ZONE 3104, US SURVEY FEET.
- SOUNDINGS ON THIS MAP REFER TO THE PLANE OF MEAN LOWER LOW WATER (MLLW) [EPOCH 1983-2001].
- MEAN LOWER LOW WATER IS 2.3-2.8 FEET BELOW NAVD88 AS DETERMINED USING VDATUM (VER. 3.0).
- SOUNDINGS DEPICTED ON THIS MAP ARE BASED ON A 3' x 3' MEDIAN CELL, SORTED TO A 45' INTERVAL.
- CONTOURS ON THIS MAP WERE GENERATED USING THE MAP DATA SET.
- THE DATA DEPICTED ON THIS MAP SHOULD NOT BE USED FOR VOLUME CALCULATION PURPOSES.
- AERIAL IMAGERY PROVIDED BY NYGIS ORTHOIMAGERY (2017)
- THE PLANIMETRICS DEPICTED ON THIS MAP ARE FOR ORIENTATION PURPOSES ONLY.
- THIS SURVEY WAS PERFORMED USING REAL TIME KINEMATIC GPS FROM STATION "NY DOT RTN-RTX WEEHAWKEN-CAVEN POINT BASE".
- THIS MAP IS CEPD COMPLIANT IN ACCORDANCE WITH ER 1110-2-8160 AND EM 1110-2-6056.

<b>LOCAL CONTROL DATA</b>	
BENCHMARK: AJD 10020	ELEVATION: 5.68' (NAVD 88)
<b>NSRS BENCHMARK</b>	
BENCHMARK: HIGHWOOD 3 1932 (PID: KV4023)	ELEVATION: 167.19' (NAVD 88)



DBL CLICK ON ICON  
EDGE TO OPEN

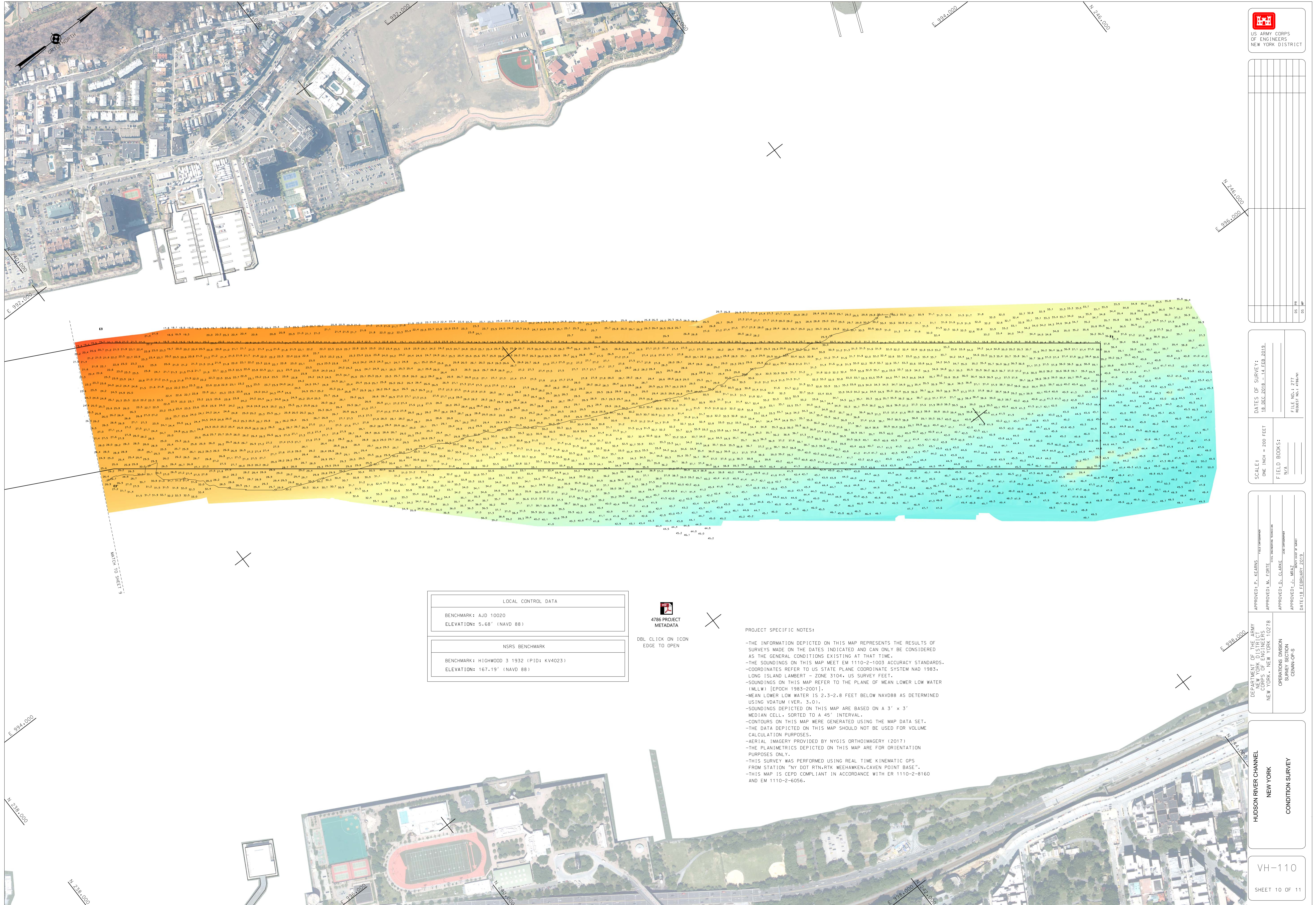
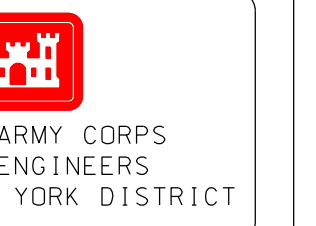


**HUDSON RIVER CHANNEL  
NEW YORK  
CONDITION SURVEY**

VH-108  
SHEET 8 OF 11







E 992.000  
N 241.000

E 994.000

N 246.000

N 246.000  
E 998.000

E 998.000

LOCAL CONTROL DATA	
BENCHMARK: AJD 10020	ELEVATION: 5.68' (NAVD 88)
NRSR BENCHMARK	
BENCHMARK: HIGHWOOD 3 1932 (PID: KV4023)	ELEVATION: 167.19' (NAVD 88)

4786 PROJECT METADATA

DBL CLICK ON ICON EDGE TO OPEN

PROJECT SPECIFIC NOTES:  
 -THE INFORMATION DEPICTED ON THIS MAP REPRESENTS THE RESULTS OF SURVEYS MADE ON THE DATES INDICATED AND CAN ONLY BE CONSIDERED AS THE GENERAL CONDITIONS EXISTING AT THAT TIME.  
 -THE SOUNDINGS ON THIS MAP MEET EM 1110-2-1003 ACCURACY STANDARDS.  
 -COORDINATES REFER TO US STATE PLANE COORDINATE SYSTEM LAD 1983, LONG ISLAND LAMBERT - ZONE 3104, US SURVEY FEET.  
 -SOUNDINGS ON THIS MAP REFER TO THE PLANE OF MEAN LOWER LOW WATER (MLLW) [EPOCH 1983-2001].  
 -MEAN LOWER LOW WATER IS 2.3-2.8 FEET BELOW NAVD88 AS DETERMINED USING VDATUM (VER. 3.0).  
 -SOUNDINGS DEPICTED ON THIS MAP ARE BASED ON A 3' x 3' MEDIAN CELL, SORTED TO A 45° INTERVAL.  
 -CONTOURS ON THIS MAP WERE GENERATED USING THE MAP DATA SET.  
 -THE DATA DEPICTED ON THIS MAP SHOULD NOT BE USED FOR VOLUME CALCULATION PURPOSES.  
 -AERIAL IMAGERY PROVIDED BY NYGIS ORTHOIMAGERY (2017)  
 -THE PLANIMETRICS DEPICTED ON THIS MAP ARE FOR ORIENTATION PURPOSES ONLY.  
 -THIS SURVEY WAS PERFORMED USING REAL TIME KINEMATIC GPS FROM STATION "NY DOT RTN:RTK WEHAWKEN,CAVEN POINT BASE".  
 -THIS MAP IS CEIP COMPLIANT IN ACCORDANCE WITH ER 1110-2-8160 AND EM 1110-2-6056.

DATE OF SURVEY: 15 DEC 2018	FILE NO.: 277
SCALE: ONE INCH = 200 FEET	DESIGN: DS-IMP
DATES OF SURVEY: 15 DEC 2018 - 14 FEB 2019	DESIGN: DS-IMP
FIELD BOOKS: N/A	REVISION NO.: REVISION

APPROVED: E. KEARNS	DATE: 18 FEBRUARY, 2019
APPROVED: M. EGRITE	
APPROVED: D. CLORSE	
APPROVED: J. MARZ	

DEPARTMENT OF THE ARMY CORPS OF ENGINEERS NEW YORK, NEW YORK 10278	OPERATIONS DIVISION SOUTH PLANKEN KENNY OPS
HUDSON RIVER CHANNEL NEW YORK	CONDITION SURVEY

VH-110
SHEET 10 OF 11